



EVALUATION BRIDGE #17325
COUNTY ROAD 44
WASHINGTON COUNTY
CONCRETE ARCH – DECK, CLOSED SPAN
DATE OF CONSTRUCTION – 1921
BUILDER – LUTEN BRIDGE COMPANY

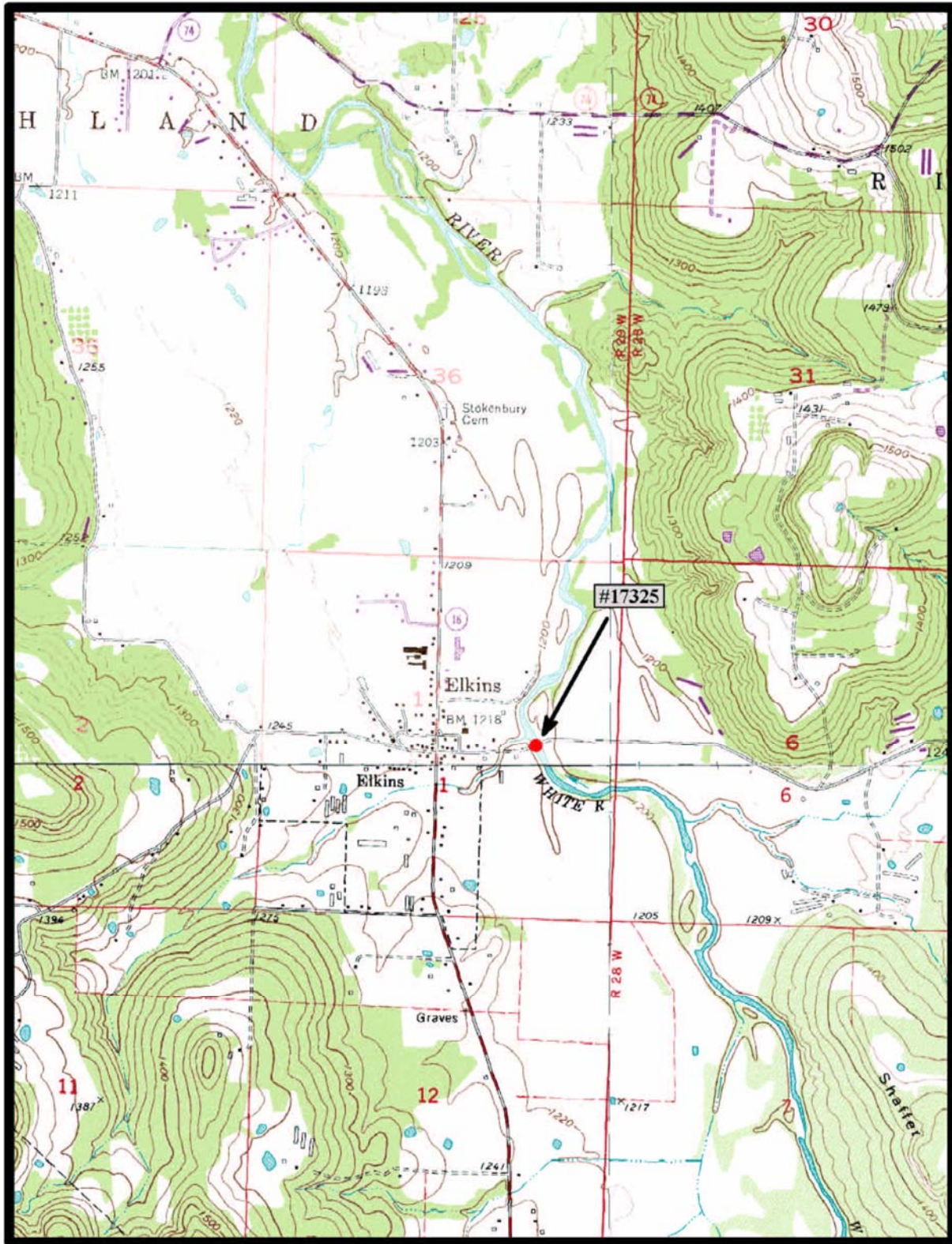


Evaluation Concrete_Arch_Bridges Properties [X]

General | **Attributes**

Name	Value
Bridge Number	17325
Span_Type	Closed
Date_Built	1921
County	Washington
Road	CR 44
Crosses	White River
Builder	Luten Bridge Company
Number_of_Spans	1
Span_Length	72
Deck_Width	15
Structure_Length	204
Skewed	False
Altered	False
Unique	Luten Concrete Arch
On_NR	False
Demolished	False
Photographed	True
Original_Job	
Replacement_Job	
Plans	False
In_GIS	True
Attribute1	5
Bridge_Number1	17325
Pool_Reserve	No
Evaluation	Yes
Owner	County

Close



Elkins, Goshen, Sulphur City, Durham 7.5 min. Quads

Notes



EVALUATION BRIDGE #17390
RESERVE POOL
COUNTY ROAD 623
WASHINGTON COUNTY
CONCRETE ARCH – DECK, CLOSED SPAN
DATE OF CONSTRUCTION – 1923
BUILDER – LUTEN BRIDGE COMPANY

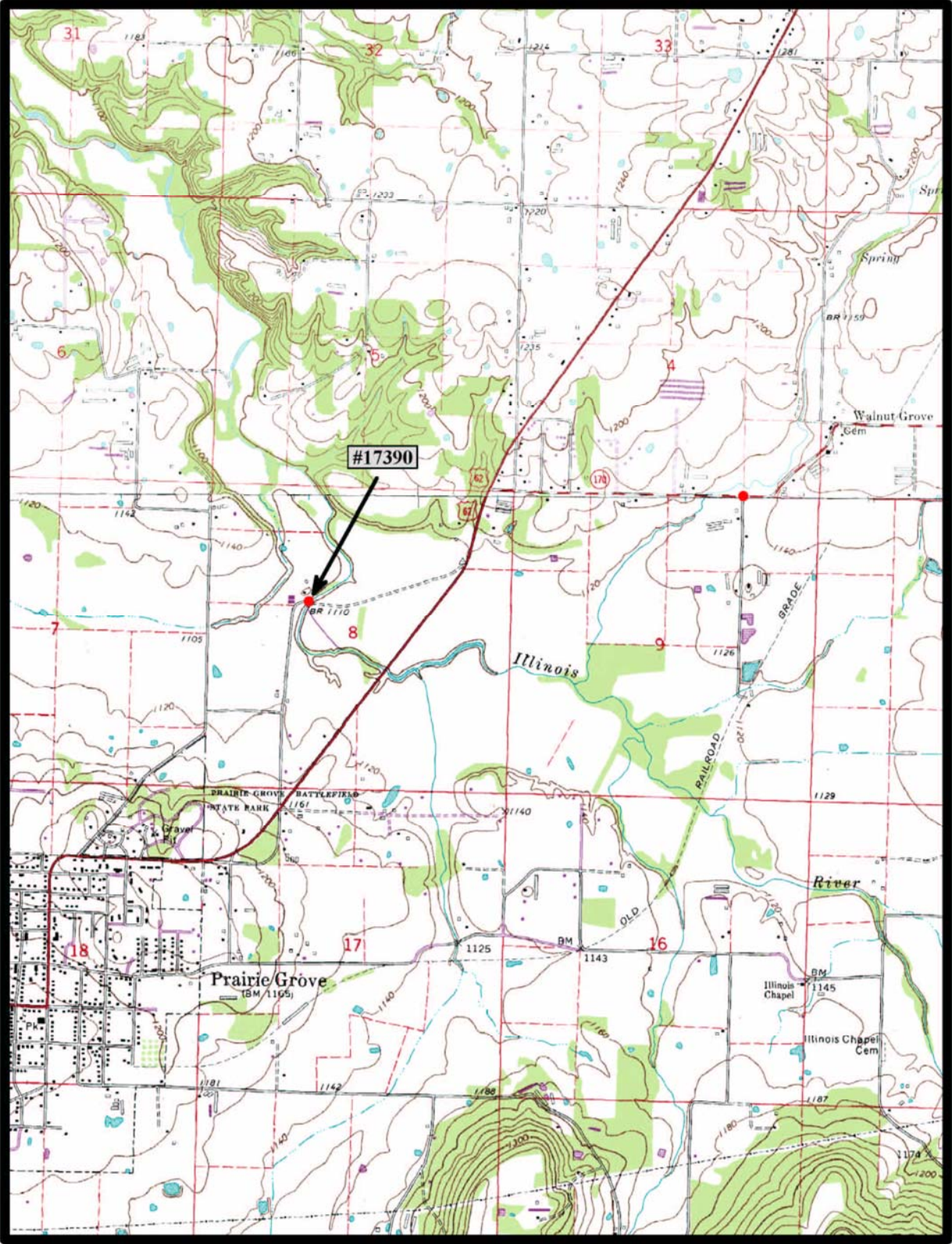


Evaluation Concrete_Arch_Bridges Properties [X]

General | **Attributes**

Name	Value
Bridge Number	17390
Span_Type	Closed
Date_Built	1923
County	Washington
Road	CR623
Crosses	Illinois River
Builder	Luten Bridge Company
Number_of_Spans	1
Span_Length	97
Deck_Width	15
Structure_Length	100
Skewed	True
Altered	False
Unique	Luten Concrete Arch
On_NR	False
Demolished	False
Photographed	True
Original_Job	
Replacement_Job	
Plans	False
In_GIS	True
Attribute1	7
Bridge_Number1	17390
Pool_Reserve	Yes
Evaluation	Yes
Owner	County

Close



Prairie Grove. Wheeler 7.5 min. Quads

Notes



EVALUATION BRIDGE #17729
COUNTY ROAD 52
YELL COUNTY
CONCRETE ARCH – DECK, CLOSED SPAN
DATE OF CONSTRUCTION – 1920
BUILDER – UNKNOWN



Evaluation Concrete_Arch_Bridges Properties

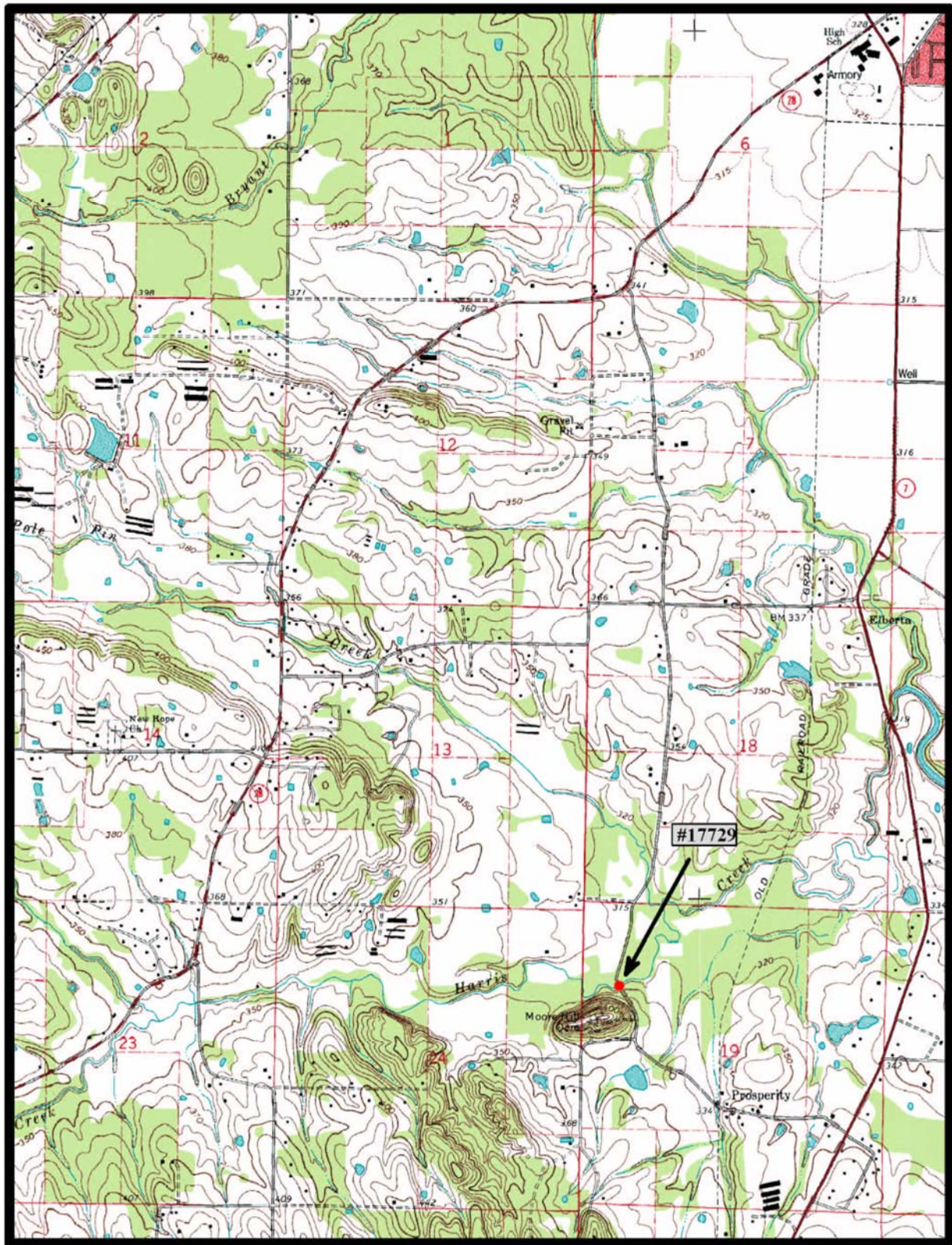


General

Attributes

	Name	Value
▶	Bridge Number	17729
	Span_Type	Closed
	Date_Built	1920
	County	Yell
	Road	CR 52
	Crosses	Harris Creek
	Builder	County Forces
	Number_of_Spans	1
	Span_Length	38
	Deck_Width	12
	Structure_Length	42
	Skewed	False
	Altered	False
	Unique	
	On_NR	False
	Demolished	False
	Photographed	True
	Original_Job	
	Replacement_Job	
	Plans	False
	In_GIS	True
	Attribute1	34
	Bridge_Number1	17729
	Pool_Reserve	No
	Evaluation	Yes
	Owner	County

Close



Dardanelle 7.5 min. Quads

Notes



EVALUATION BRIDGE #18275

RESERVE POOL

GRANGER ROAD

SHARP COUNTY

CONCRETE ARCH – DECK, CLOSED SPAN

DATE OF CONSTRUCTION - 1923

BUILDER - UNKNOWN

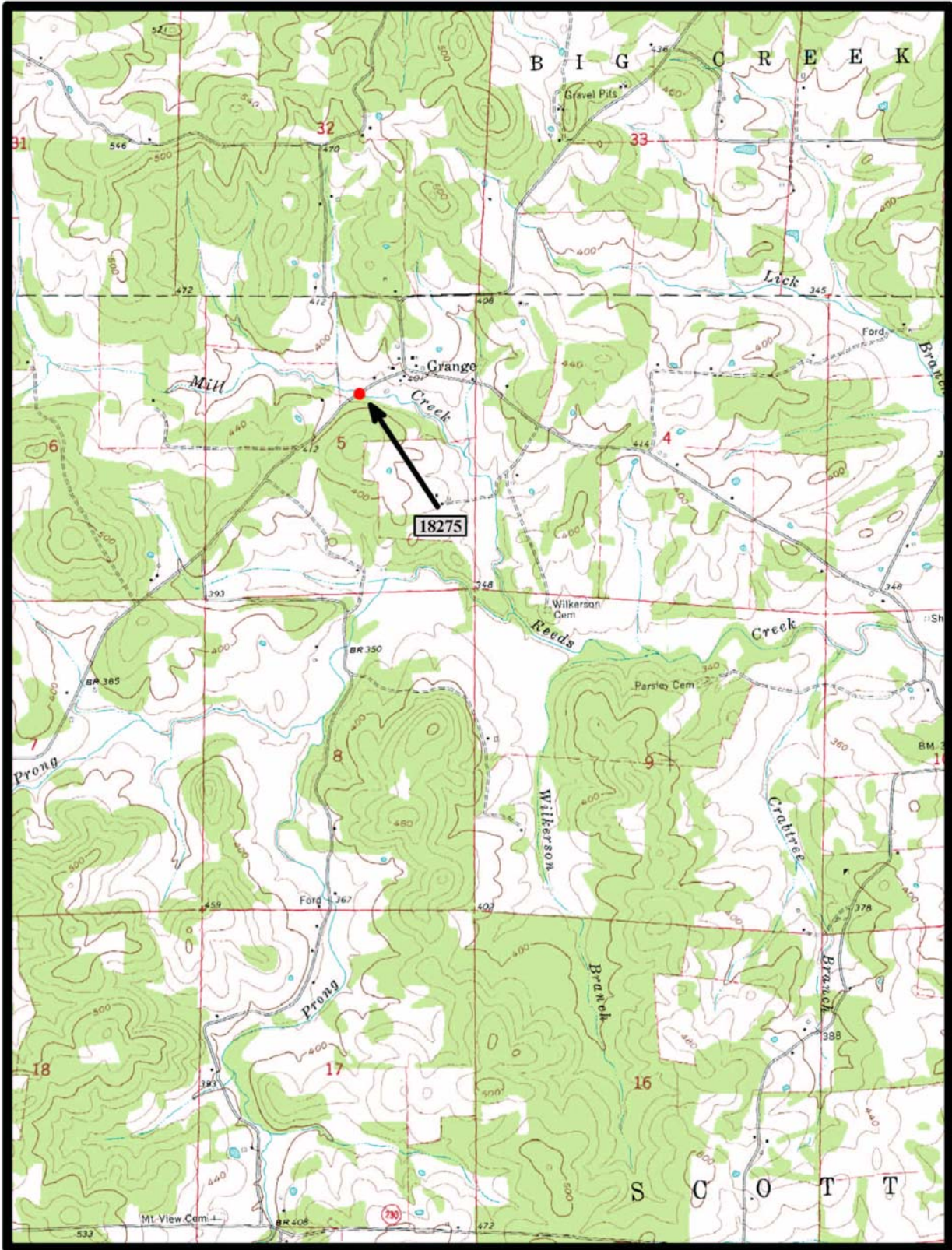


Evaluation Concrete_Arch_Bridges Properties [X]

General | **Attributes**

Name	Value
Bridge Number	18275
Span_Type	Closed
Date_Built	1936
County	Sharp
Road	CR 23 (Granger Road)
Crosses	Creek
► Builder	
Number_of_Spans	3
Span_Length	11
Deck_Width	24
Structure_Length	32
Skewed	False
Altered	False
Unique	Masonry Exterior & Piers
On_NR	False
Demolished	False
Photographed	True
Original_Job	
Replacement_Job	
Plans	False
In_GIS	False
Attribute1	89
Bridge_Number1	18275
Pool_Reserve	No
Evaluation	Yes
Owner	County

Close



Grange 7.5 min. Quad

Notes